

Human HGFR(Met) Protein; His Tag

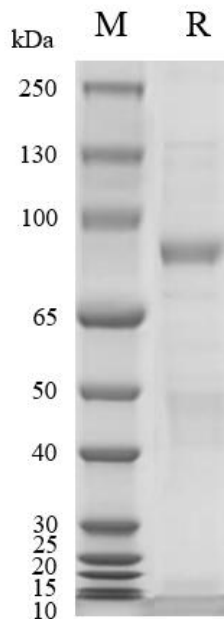
Product Information

Product Name	Human HGFR(Met) Protein; His Tag
Storage temp.	Store at $\leq -70^{\circ}\text{C}$, stable for 6 months after receipt. Recommend to aliquot the protein into smaller quantities for optimal storage. Please minimize freeze-thaw cycles.
Catalog# / Size	GM-87764RP-100 / 100 μg GM-87764RP-1000 / 1 mg

Protein Information

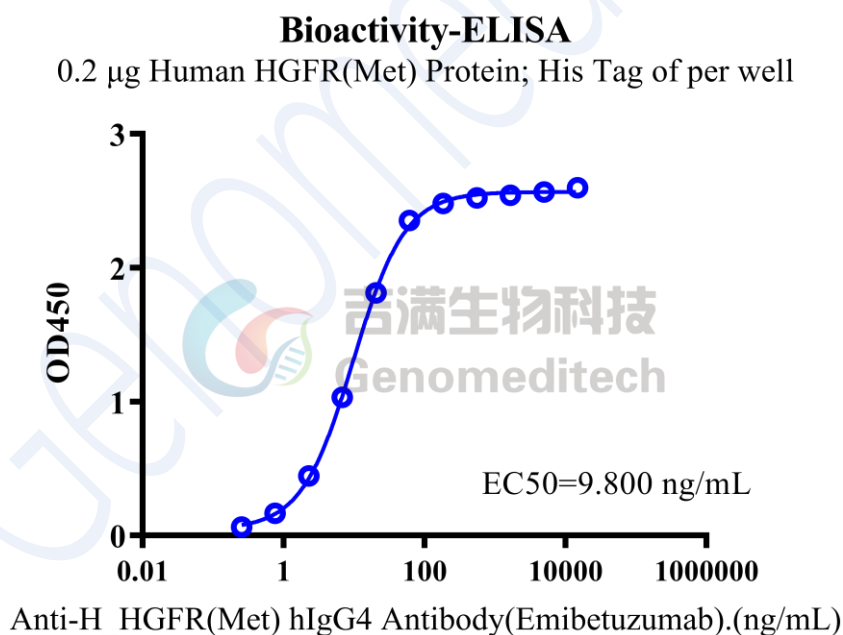
Alternative Names	MET,AUTS9,HGFR,RCCP2,c-Met
Source	Human HGFR(Met) Protein; His Tag (GM-87764RP) is expressed from human 293 cells (HEK-293). It contains AA Glu25-Thr932 (Accession # P08581-1). This protein carries a His tag at the C-terminus.
Purity	> 90% as determined by SDS-PAGE
Endotoxin	< 1 EU/ μg , determined by LAL gel clotting assay
Predicted Mol Mass	31.2 KDa(α chain) & 69.4 KDa(β chain)
Formulation	Supplied as a 0.2 μm filtered solution of PBS, pH7.2-7.4.
Description	<p>HGFR (Hepatocyte Growth Factor Receptor), also known as c-MET, is a transmembrane tyrosine kinase that primarily functions by binding to its ligand, hepatocyte growth factor (HGF). HGFR/c-MET plays a crucial role in cell growth, migration, and survival, especially during cell development, tissue repair, and regeneration. Under normal circumstances, the activity of this receptor helps maintain cellular balance and tissue health.</p> <p>However, the abnormal activation of HGFR/c-MET is closely associated with various human diseases, particularly cancer. Some tumor cells exhibit overexpression or mutations of HGFR, leading to enhanced cell proliferation and metastatic ability. Therefore, HGFR/c-MET is considered an important target for cancer therapy, and researchers are developing targeted drugs against it to improve cancer treatment outcomes.</p>

SDS-PAGE



On SDS-PAGE under reducing (R) condition. The gel was stained overnight with Coomassie Blue. The purity of the protein is greater than 90%.

Bioactivity-ELISA



Human HGFR(Met) Protein; His Tag (Catalog # GM-87764RP) was immobilized at 2 μ g/ml (100 μ L/well). Increasing concentrations of Anti-H_HGFR(Met) hIgG4 Antibody(Emibetuzumab) (Catalog # GM-28859AB) were added.